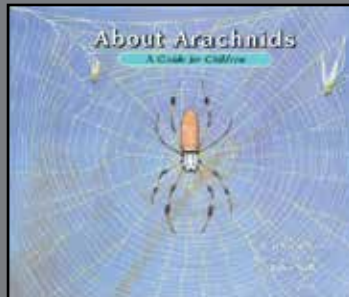


ABOUT SERIES

A Guide for Children



978-1-56145-234-7



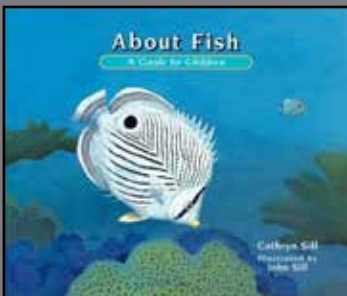
978-1-56145-038-1



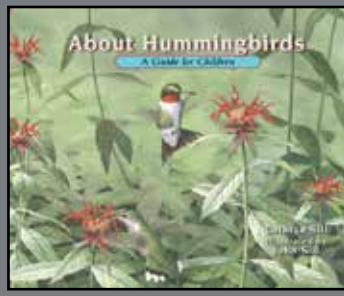
978-1-56145-688-8



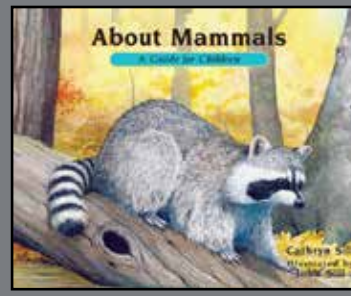
978-1-56145-301-6



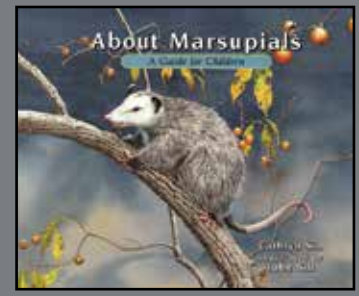
978-1-56145-256-9



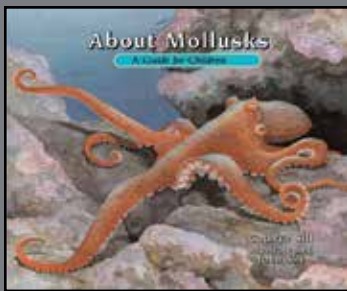
978-1-56145-588-1



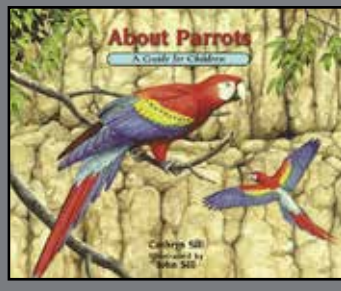
978-1-56145-757-1



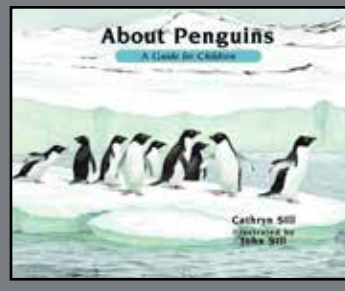
978-1-56145-358-0



978-1-56145-331-3



978-1-56145-795-3

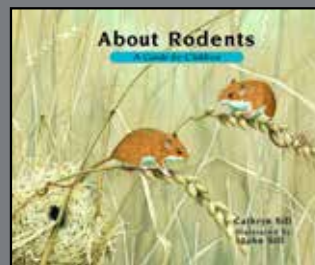
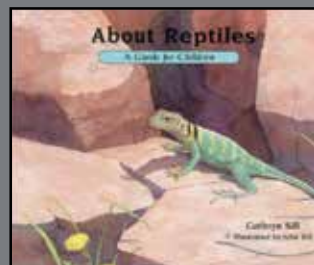


978-1-56145-743-4



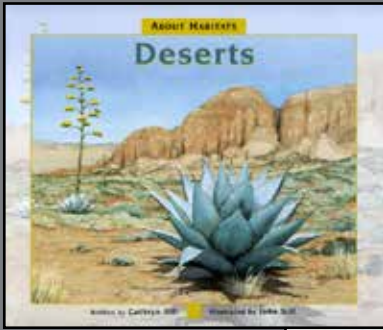
978-1-56145-536-2

978-1-56145-183-8

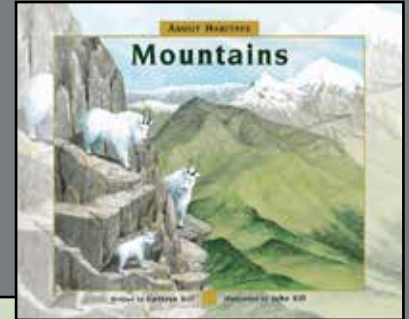


978-1-56145-454-9

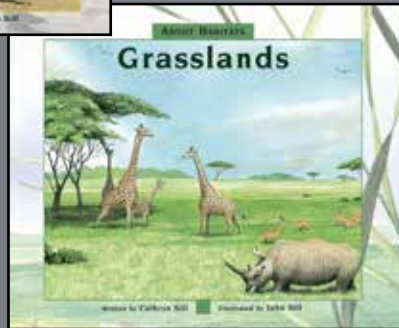
ABOUT HABITATS



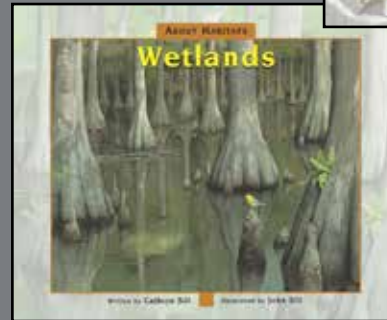
978-1-56145-641-3



978-1-56145-469-3



978-1-56145-559-1



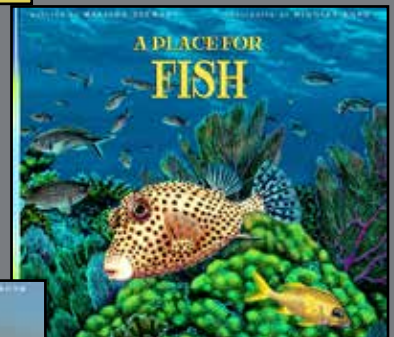
978-1-56145-432-7

A PLACE FOR

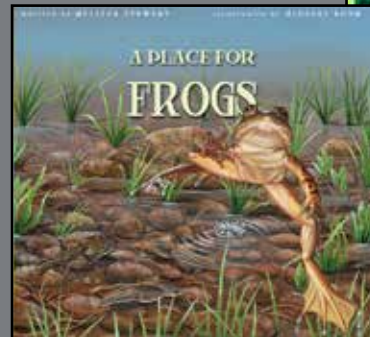
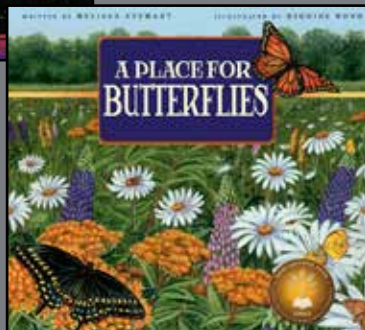


978-1-56145-474-7

978-1-56145-562-1



978-1-56145-357-3



978-1-56145-521-8

Cathryn Sill, a graduate of Western Carolina University, was an elementary school teacher for thirty years. She lives in North Carolina.

John Sill holds a BS in wildlife biology from North Carolina State University. Combining his knowledge of wildlife and artistic skill, John has achieved an impressive reputation as a wildlife artist and received several awards. He lives in North Carolina.